



LV JUICE

SUPPLY CHAIN ISSUES? WE'VE GOT YOU COVERED

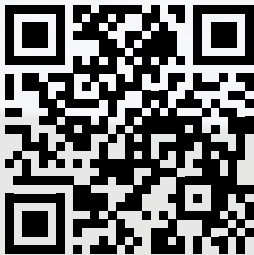
COVERED

WHAT MAKES TRANSNET AS/NZ4702-2000 CABLE COVER DIFFERENT

- NZ made from recycled HDPE plastic and fully recyclable
- Thinner and lighter while consistently complying with strength requirements of AS/NZ 4702-2000
- No contaminants and won't leech into soil
- Retains mechanical strength characteristics even in extreme temperatures
- Every batch is tested throughout the manufacturing process to ensure it consistently complies
- Custom runs available (MOQs & conditions apply)



VIEW THE RANGE



ASTRON
breathing new life into plastics



This Month

- DOES YOUR EARTH ROD COMPLY? PAGE 3
- POP'N'WORK POP UP TENTS PAGE 6
- TRANSNET MAINS ENTRY BOX PAGE 8

FREE POTTER BROS CHOC

WHILE STOCKS LAST

When you spend over \$500 (+GST) on one invoice this month



www.transnet.co.nz

BUILT FOR TOUGH CONDITIONS

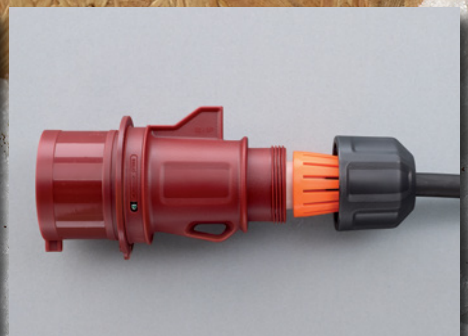


famatek
PROFESSIONAL

SpeedPRO INDUSTRIAL PLUGS AND SOCKETS

ERGONOMIC, ROBUST,
SAFE, FAST, & ACCURATE
CONNECTIONS

Famatek industrial plugs and sockets are ergonomically designed for ease of use and made from materials carefully selected for operation in harsh environments requiring high mechanical resistance.



TRANSNET MONTHLY GIVEAWAY SUPPORTING KIWI BUSINESSES

We've had them before and they were such a hit that we had to bring them back again for more. This month's giveaway comes once again from Potter Bros in Levin, the excellent family run chocolate factory that gave us their

delicious soft fudge milk chocolate and dark peppermint cream treats earlier this year. The time and effort that goes into handcrafting these beautiful confections is evident in the flavour and we couldn't

<http://potterbrothers.co.nz>

get enough of them in the TransNet office, so it's only fair we let all our customers enjoy another round of them as well.



Ph 0800 442 182
+64 9 274 3340

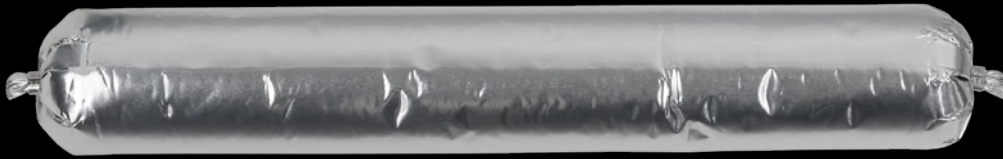
sales@transnet.co.nz

www.transnet.co.nz

SIMPLE AND EFFECTIVE



INTRODUCING THE MASTIC SAUSAGE



Mastic 600ml Bulk Pack

This mastic is an internal use water-borne acrylic sealant with fire and smoke resistant properties used for sealing apertures around service penetrations. It cures to form a firm and flexible seal preventing the spread of flame and smoke through joints and openings in Ryanfire 502/802 board and in fire rated walls & floors.

FTMASTICSAUSAGE

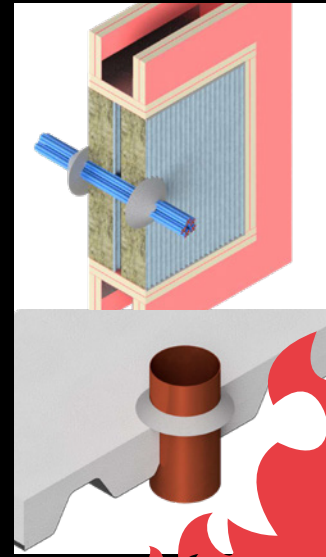


FEATURES

- Tested to AS1530.4:2014
- Tested in walls & floors including masonry, plasterboard, concrete, composite floors, timber infill, Korok, PLT, & plasterboard ceilings
- Quick curing
- Gun grade
- Flexible
- Up to 120 mins FRR



VIEW THE RANGE



DOES YOUR EARTH ROD COMPLY WITH AS/NZS3000:2007?

AS/NZS3000:2007 requires an earth electrode to have a minimum of 63µm of Hot Dip Galvanising. Zinc plated rods* found in the market don't even get close to meeting these requirements, but our Hot Dip Galvanised Rods exceed it!

WHY GALVANISED OUTPERFORMS ZINC

- Dipped after cutting to reduce risk of corrosion
- More than the 63µm minimum surface treatment thickness required by AS/NZS 3000:2007
- Shaped end to reduce "mushrooming" during installation
- Surfaces are rigidly inspected to eliminate seams, slivers & other defects
- Pointed tip
- Cost-effective
- Sold in packs of 100

* Zinc plating results may vary

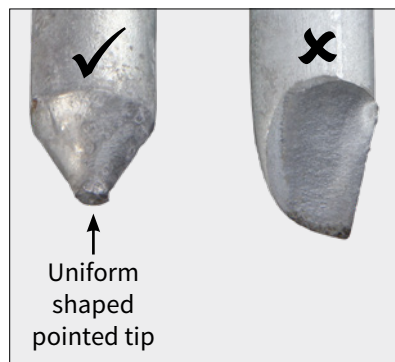
MICROMETER RESULTS



FAILS TO MEET THE STANDARD*



MEETS THE REQUIREMENTS FOR AS/NZS3000:2007!



OUR ROD VS. THE COMPETITION



All Specials and Products featured in TRANSNET JUICE are available from all good electrical wholesalers.





ECOLIGHT BULKHEAD WITH SENSOR

LEDBKHD-23SEN LED COMMERCIAL CEILING LAMP

With a neat and stylish design this LED bulkhead lamp looks great in any location. Its LED light source provides excellent diffused lighting at a lower cost than traditional bulkhead lamps, and the robust and rugged plastic housing makes it the perfect light for busy public spaces such as passageways, bathrooms and stairwells.

The LEDBKHD-23SEN offers an adjustable onboard light and motion sensor that can be adapted to suit most applications.

FEATURES

- IP65 rating
- Motion sensor
- Plastic cover ring available
- High/low options available
- Master/slave function
- 50,000 hour lifespan



TECHNICAL SPECIFICATIONS

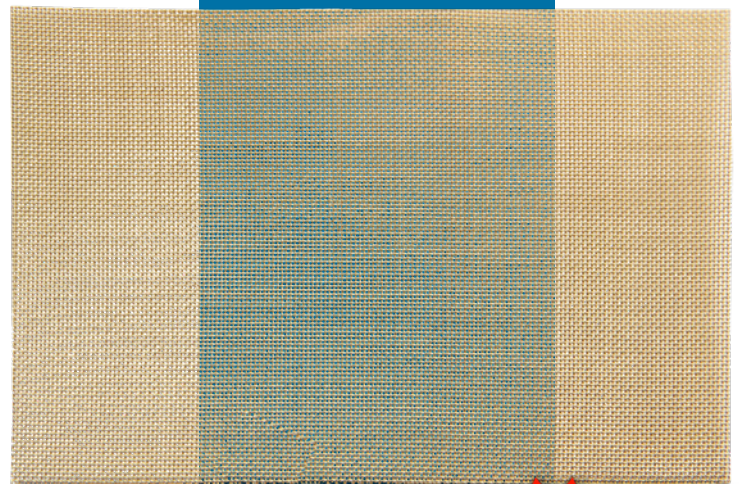
CAT NO.	LEDBKHD-23SEN
INPUT VOLTAGE	220-240V~50Hz
LED TYPE	SMD3014
TOTAL POWER	23W
FIXTURE LUMENS	1400lm
SENSOR	Yes
LED QUANTITY	200
MAX. SLAVES	15 pieces
WEIGHT	1.48kg
LIFESPAN	>50,000 hours
IP RATING	IP65

BRASS GAUZE FOR USE ON COPPER FLEXIBLE CONDUCTORS

TE Connectivity (TE)'s brass gauze can be used to wrap copper conductors, and is recommended for small or loosely compacted conductors for a more secure fit in mechanical connectors.

The brass gauze is sold in pack of 3, each piece is 50mm x 70mm and the purpose is to offer improved electrical stability when joining copper cores.

Cat No.	Dimensions (mm)	Pack Size
GA5070	50 X 70	3
GA50100	50 X 100	



**ESSENTIAL
PRODUCT**



AUTHORIZED DISTRIBUTOR



ROLL SPRINGS

Also known as constant force springs, roll springs, made from fatigue resistant Stainless Steel, are used to attach a shielding braid to the tape shield of a plastic cable when terminating or jointing. The larger sizes are mainly used for attaching earth braids to lead sheathed cables and commonly form an integral part of the MV TE joints and terminations.

TE's roll springs also work with copper earth braid as a clamp to hold it in place.



Cat No.	Application Range (mm)	Internal Diameter Max (mm)	Width Max (mm)
EPPA-034-A	12-20	10	13
EPPA-034-B	17-26	14	
EPPA-034-C	25-40	20	
EPPA-034-E	17-29	14	25
EPPA-034-F	30-39	22	
EPPA-034-M	33-45	19	
EPPA-034-G	40-60	30	
EPPA-034-H	50-75	37	30



AUTHORIZED DISTRIBUTOR

COPPER BRAID

TE's copper braid is used for earthing applications and cable jointing where the cable needs to be fully reinstated. The tinned Copper braid is a flexible fine woven wire product with a tinned finish.

Sold by the metre, Earth Braid can be cut to length to reduce waste.

Cat No.	Cross Sectional Area (mm ²)	Width (mm)	Unit
EPPA-013-1-A	7	10	METRE
EPPA-013-3-A	25	17	
EPPA-013-5-A	35	20	
EPPA-013-6-A	50	25	



AUTHORIZED DISTRIBUTOR



GET THE JOB DONE, RAIN OR SHINE

Pop 'N' Work pop up work tents and umbrellas have been made in America for over 35 years. Available in a range of sizes and styles, these high quality shelters are easy to use and protect field staff from UV and rain when working in the elements.

FEATURES & BENEFITS

- Safe and comfortable work environment
- Made from a lightweight, UV stable protective polyester
- Water repellent
- Flame resistant to CPAI-84 standards
- Pitched roof provides extra headroom and structural strength to hang tools and lights
- Reduced weather related delays and increased productivity
- Sizes from 4' x 4' up to 12' x 10'
- 2 year guarantee on the frame

INDUSTRY APPLICATIONS

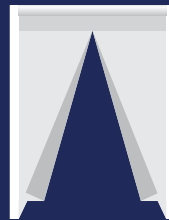
- Telecom
- Welding
- Oil and Gas
- Utilities
- Railroad
- Construction
- Emergency Response

TIME SAVING

- Set up in seconds
- No loose parts
- Lightweight and durable
- Convenient Pop'N'Work Quick-Pack tent rolls up into carrying case, no separate bag needed

ENGINEERED FOR DURABILITY

- Exclusive Pop'N'Work unified frame made with cold rolled steel and fiberglass is virtually unbreakable



GROUND TENTS

VERSA TENTS

UMBRELLAS

VIEW THE WHOLE RANGE



CONTACT US TODAY FOR MORE INFO AND TO ORDER



Ph 0800 442 182
+64 9 274 3340

sales@transnet.co.nz

www.transnet.co.nz

METREL CLAMP RANGE



MD9250



**AC/DC CAT IV 1000V
TRMS CURRENT CLAMP**

KEY FEATURES

Auto-ranging
55mm large jaw opening
Accurate measurements on sinusoidal and non-sinusoidal signals
VFD: capable of measuring the true values in accordance with frequency

High current: 2000 A DC & AC clamp on measurement.
AutoCheck® mode provides low (ramp-up) input impedance to drain ghost voltages.
Auto-check function: automatic detection of AC voltage, DC voltage or resistance.
Transient protection up to 12 kV
Relative zero

In-rush: fast 5ms Crest-MAX mode to capture in-rush currents
Temperature up to 1000 °C or 1832 °F
Data hold function
LCD display with backlight, 3-5/6 digit, 6000 count
CAT IV / 1000 V overvoltage protection

MEASURING FUNCTIONS

TRMS AC, DC voltage & current measurements
Capacitance, resistance, frequency, & temperature measurements
Diode test
Electric field detection
Continuity test (acoustic signalling)

MD9226



**AC/DC 600A TRMS
CURRENT CLAMP**

The MD9226 has a wide range of extra features, including peak value, data and MAX hold functions, auto power off, auto-ranging and a relative zero function.

KEY FEATURES

Auto-ranging
Automatic, non-contact detection of electromagnetic fields to locate and trace live conductors
Data hold function
MIN/MAX/AVG function
Peak value
Relative zero
35mm jaw opening
CAT IV / 300 V, CAT III / 600 V overvoltage categories
LCD display with backlight, 3-5/6 digit, 6000 count

MEASURING FUNCTIONS

DC and TRMS AC voltage up to 600 V, current measurement up to 600 A
Resistance, frequency & capacitance measurements
Acoustic continuity test
Diode test

MD9272



**TRMS LEAKAGE CLAMP
WITH POWER FUNCTIONS**

KEY FEATURES

TRMS: accurate measurements on sinusoidal and non-sinusoidal signals
28mm jaw opening
Shielded Jaw allows the clamp meter to be used in the noisiest environments
AC current readings with accuracy of 0.8 % & base resolution of 0.01mA and voltage with 0.5% accuracy & base resolution of 0.01V
Various power parameters – active/reactive/apparent power/THD/PF/phase displacement
Measures current or voltage harmonic components & a percentage value up to 19th of a harmonic

Dual display for readings with Total Harmonic Distortion (THD) or Power Factor (PF)

Peak value: the peak value of the waveform or crest factor can be displayed

MAX/MIN/HOLD mode: displays maximum, minimum or average measured value

MEASURING FUNCTIONS

TRMS AC, DC voltage measurement
TRMS AC current measurement
Frequency measurement
Power parameters measurement



TICKS ALL THE BOXES

Options for 1, 2, & 3 Phase



Auckland

78 Cryers Road
East Tamaki
Auckland
NEW ZEALAND
Ph 0800 442 182
PO Box 39 383
Howick, Auckland

Wellington

10 Petone Ave
Petone
Wellington
NEW ZEALAND
Ph 04 576 2530
PO Box 39 383
Howick, Auckland
NEW ZEALAND
sales@transnet.co.nz

TransNet Tonga

Nuku'alofa

Lakalakaimonu Multi Utility
Complex
Taufa'ahau Road
Poutaha
Nuku'alofa
TONGA
Ph +67 627 939
PO Box 2932
Nuku'alofa
TONGA
transnet@kalianet.to

IN STOCK! TRANSNET MAINS ENTRY BOX

*The faster, safer, easier-to-install
Mains Entry Box*



UV STABLE PLASTIC

Won't shatter



SAVE TIME

Make off connectors outside enclosure



SHEAR BOLT CONNECTIONS

Perfect connection every time



SECURE SCREW

Captive Stainless Steel cover screw

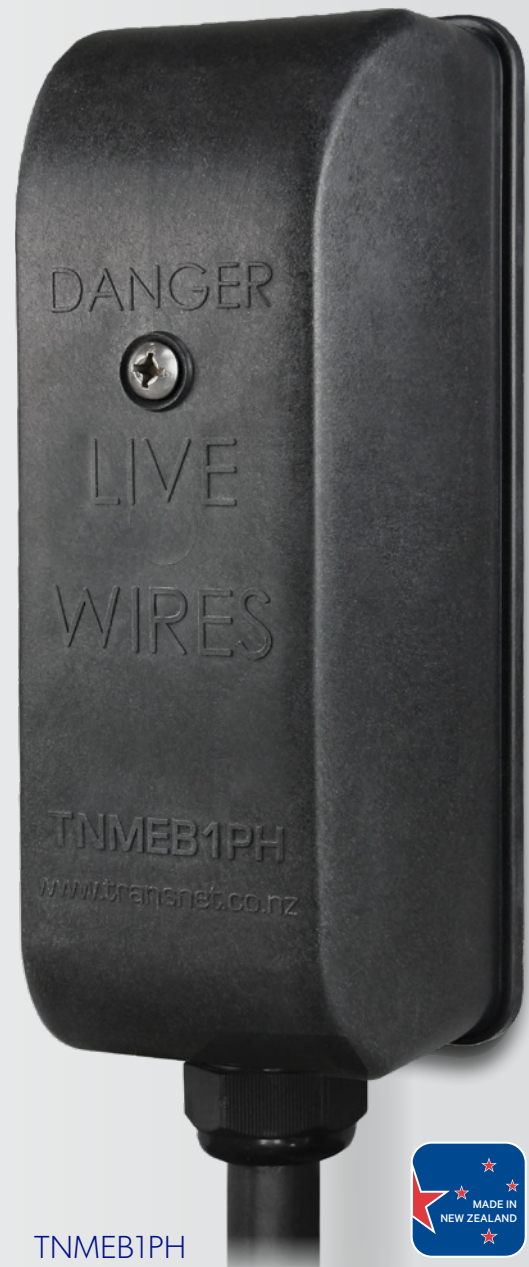


SAFER TO INSTALL

No bare live parts

FEATURES

- Main cable supported by gland in gland plate
- Gland plate perfect fit for conduit gland too
- Strip length clearly outlined on connector body
- Electrical test points and test point caps built into connector bolt for ease of testing
- Insulated bimetallic connectors will terminate AL/CU cables, 4mm²-35mm² range



TNMEB1PH



TransNet NZ Ltd has made every reasonable effort to ensure the accuracy of this information and it is to the best of our knowledge correct and reliable. Under no circumstances does this constitute an assurance of any particular quality or performance and users should independently evaluate the suitability of products for their desired application. All information in this publication including pricing, drawings, illustrations, images and graphic designs are reflections of our current understanding. TransNet NZ Ltd reserves the right to make any adjustment to this information at any time. Our liability for the products outlined in this publication is set forth in our standard terms and conditions of trade. In case of any potential ambiguities or questions, please contact us for clarification.



NEW ZEALAND OWNED